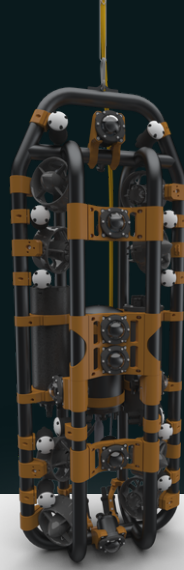


Sentinus

SELF-OPERATIONAL
INSPECTION ROBOT

BLUE ATLAS
ROBOTICS

info@blueatlasrobotics.com
+45 29 28 25 48



next generation

in-water inspections

More than just an ROV, the Sentinus underwater inspection robot provides clear, complete, detailed video imagery with a heavy emphasis on ease of use.

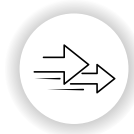
The operator's hands are freed up so they can aim their focus on the survey visual output.

no-hassle surveying

intuitive operation

Light enough for one-person deployment and no time-consuming mission planning to deal with, the Sentinus brings automation to in-water surveys in an intuitive way.

Simply guide the Sentinus towards the survey target and initiate the scan. From then, it's a self-operational experience and your completed mission is only a few controller clicks away.



FAST



INTUITIVE



COMPLETE



DATA

valuable data you'll want to keep

multi-use data

Forget the difficult task of reviewing hours of blurry inspection footage and then never using the data again. Instead, collect high-quality, clear, multi-use data.

Outputs from the Sentinus are ideal for converting into detailed 3D models of the surveyed area.

3D asset models are a quick and convenient way to:

- Document structures clearly.
- Compare changes over time.
- Track fouling, corrosion and damages.
- Incorporate underwater data into maintenance decision-making.

Images: Left: 3D model example, Right: Sentinus camera feeds



Specifications



Fast Survey

Up to 3000m² of survey per hour



Large Area Scans

Wide-area documentation



Automatic Survey

Computer-driven navigation



Orientalional Freedom

Operates in any orientation



Easy Deploy

Light-weight 16kg robot

TECHNICAL SPECIFICATIONS

Dimensions (mm)	L227 x W375 x H985	Thrusters	8 x 390 W
Weight in Air	16 kg	Run-time (Battery)	~60 minutes
Max Depth Rating	100 m	Run-time (Topside Power)	Continuous
Onboard Data Storage	2TB SSD	Orientalional Freedom	6° of freedom in motion Full rotational freedom
Construction	Aluminium enclosures, polycarbonate, acrylic	Operating Temp	-5 to +35 °C

AUTOPILOT CAPABILITIES			
<input checked="" type="checkbox"/> Automatic Navigation	<input checked="" type="checkbox"/> Auto-heading	<input checked="" type="checkbox"/> Auto-depth	<input checked="" type="checkbox"/> Self-stabilizing

TETHER

Tether type	Fiberoptic
Portability	Detachable
Available lengths	100m, 200m, Up to 500m upon request

SENSORS

Depth Sensor	Resolution: 0.2 mbar
DS Operating Range	0 to 30 bar
IMU	9-axis gyro, accelerometer, magnetometer

BATTERY

Nominal Voltage	14.8 V
Nominal Energy	230 Wh
Nominal Capacity	14000 mAh or 18000 mAh

LIGHTING SYSTEM

LED Lights	14 x 1500 Lumen lights
-------------------	------------------------

CONTROLLER

Controller	Short-range wireless Logitech f710
-------------------	------------------------------------

SPOOL

Spool	Fiberoptic / Manual
--------------	---------------------

Included Equipment



Your robot order includes the following topside equipment solutions to complement our robots.

ENCASED FIELD MONITOR

A high-brightness display monitor for use in the field.
Features an internal storage space.

Size	625 x 500 x 218 mm
Mass	12 kgs
Screen size	21.5 inch
Connection to Sentinus	Fibre and ethernet
Brightness	1500 nits

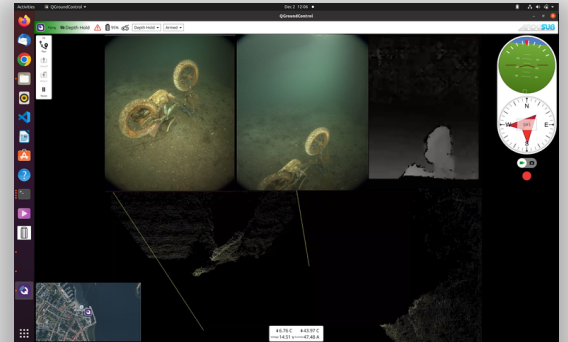


FIELD-READY LAPTOP

Processor	Intel® Core™ i7-11800H Processor
Graphics Card	NVIDIA RTX A2000 4GB GDDR6
Battery	Up to 10.3 hours (MM18)



Our field-ready laptop comes pre-installed with our Sentinus Go! App for intuitive mission launch and live review of mission feeds.



TRANSPORTATION HARD CASES TO PROTECT YOUR TOOLS

- ☑ Sentinus robot box
- ☑ Tether / spool box
- ☑ Toolbox

Want to get started
with 3D asset models?

Ask us about **Pointview**
cloud-based
data visualisation solution

State-of-the-art technology for inspection
and surveying of underwater structures
Hardware by Blue Atlas Robotics, software by IT34

